

# Injection Valve EV 6

www.bosch-motorsport.com



**BOSCH**  
Invented for life



- ▶ Single beam or twin beam
- ▶ Flow rate at 3 bar: up to 962 cm<sup>3</sup>/min (N-heptane)
- ▶ Spray angle 15 to 70°

EV 6 injection valves are designed to inject the fuel as efficiently as possible into the intake manifold runner to achieve a homogeneous distribution of fuel in air flow.

EV 6 injection valves feature high corrosion resistance and excellent engine start characteristics. The hydraulic connections of the Bosch injection valves EV 6, EV 12 and EV 14 are compatible.

## Installation Notes

Please ask for more information before ordering.

Injectors with low resistance are only supplied with a peak and hold power stage.

## Communication

### Mechanical Data

System pressure	Max. 8 bar
Weight	≤ 55 g
Fuel input	Top-feed injector
Operating temperature	-40 to 110°C
Permissible fuel temperatures	≤ 70°C
Climate-proof corresponding to saline fog test DIN 50 021	

Housing design	Standard (S), Long (L)
Spray type	C (Conical Spray) or E (2-Spray)
Flow rate at 3 bar (n-heptane)	134 to 962 cm <sup>3</sup> /min 92 to 658 g/min
Spray angle α	15 to 70°
Bent angle γ	0 to 20°
Coil resistance	1.2 to 16 Ω

### Electrical Data

Power supply	6 to 16.5 V
--------------	-------------

### Connectors and Wires

Connectors	Jetronic, Sumitomo, Motorsport connectors
------------	---

## Ordering Information

### EV 6, 116 g/min

Order number **0 280 156 194**

### EV 6, 261 g/min

Order number **0 280 155 868**

### EV 6, 261 g/min

Order number **0 280 155 830**

**EV 6, 269 g/min**Order number **0 280 156 063****EV 6, 310 g/min**Order number **0 280 156 012****EV 6, 261 g/min**Order number **B 280 431 127-07****EV 6, 364 g/min**Order number **B 280 431 128-04****EV 6, 364 g/min**Order number **B 280 431 129-03****EV 6, 493 g/min**Order number **B 280 431 131-02****EV 6, 658 g/min**Order number **B 280 434 499-02**

### Dimensions



EV 6 CL      0 280 155 737



EV 6 EL      0 280 155 830



EV 6 CL      0 280 156 005



EV 6 CL      0 280 431 127-01



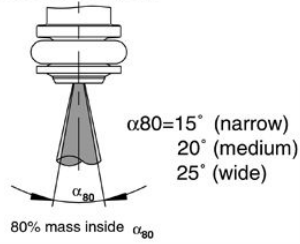
EV 6 CL      0 280 431 127-01



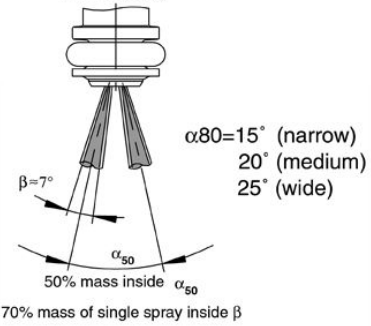
EV 6 CL      0 280 434 499-01

### Housing Variations

### C: Conical Spray

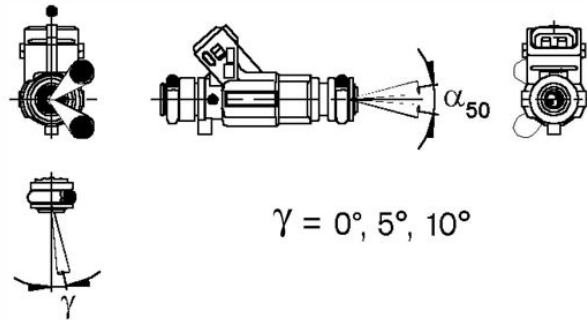
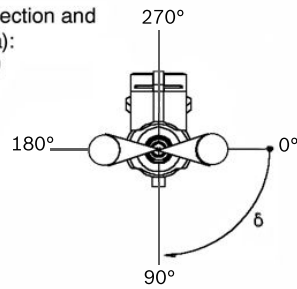


### E: 2-Spray

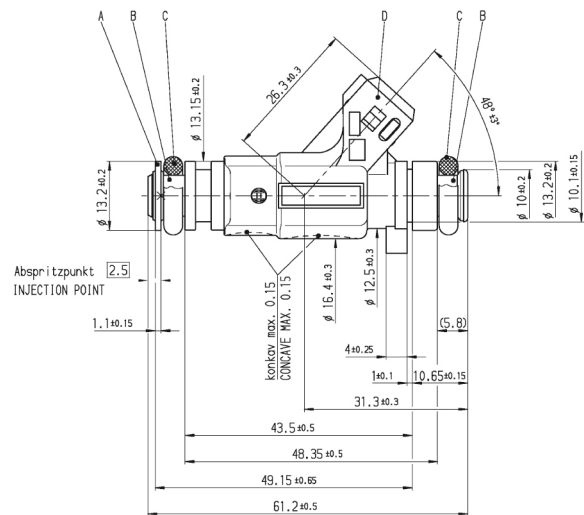
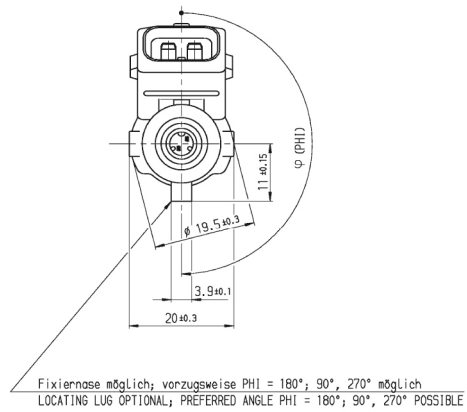


Angle between connection and spray level ( $\delta = \text{delta}$ ):  
(only 2-spray preparation)

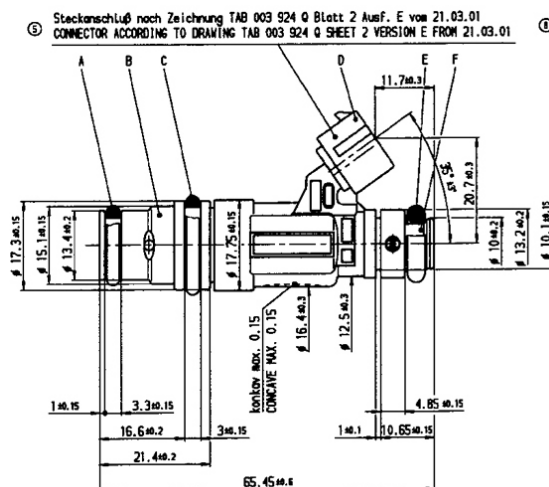
$\delta = 0^\circ - 360^\circ$  possible



### Spray Illustrations



### EV6 Standard



## EV6 Long

## EV 6 Variations

## Variations of production type valves

Part Nr.	0 280 156 194	0 280 155 868	0 280 155 830	0 280 156 063	0 280 156 012
----------	---------------	---------------	---------------	---------------	---------------

Flow rate/min	116 g/170 cm <sup>3</sup>	261 g/382 cm <sup>3</sup>	261 g/382 cm <sup>3</sup>	269 g/393 cm <sup>3</sup>	310 g/453 cm <sup>3</sup>
Type	C	C	E	E	C
Housing	S	L	L	L	S
<b>α</b> 80	15°	15°	20°	15°	20°
<b>γ</b>	0°	0°	0°	10°	5°
Resistance	14.5 Ω	12 Ω	12 Ω	12 Ω	12 Ω

Further variations are available on request

## Variations of Motorsport valves

Part Nr.	B 280 431 127-07	B 280 431 128-04	B 280 431 129-03	B 280 431 131-02	B 280 434 499-02
----------	------------------	------------------	------------------	------------------	------------------

Flow rate/min	261 g/382 cm <sup>3</sup>	364 g/533 cm <sup>3</sup>	364 g/533 cm <sup>3</sup>	493 g/721 cm <sup>3</sup>	658 g/962 cm <sup>3</sup>
Type	C	C	C	C	C
Housing	S	S	S	S	S
<b>α</b> 80	70°	25°	70°	70°	25°
<b>γ</b>	0°	0°	0°	0°	0°
Resistance	12 Ω	12 Ω	12 Ω	1.2 Ω	12 Ω

Further variations are available on request.

**Represented by:**

**Europe:**

Bosch Engineering GmbH  
Motorsport  
Robert-Bosch-Allee 1  
74232 Abstatt  
Germany  
Tel.: +49 7062 911 79101  
Fax: +49 7062 911 79104  
motorsport@bosch.com  
www.bosch-motorsport.de

**North and South America:**

Bosch Engineering North America  
Motorsports  
38000 Hills Tech Drive  
Farmington Hills, MI 48331-3417  
United States of America  
Tel.: +1 248 876 2977  
Fax: +1 248 876 7373  
motorsport@bosch.com  
www.bosch-motorsport.com

**Asia-Pacific:**

Bosch Engineering Japan K.K.  
Motorsport Department  
18F Queen's Tower C, 2-3-5 Minato Mirai Nishi-ku, Yokohama-shi  
Kanagawa 220-6218  
Japan  
Tel.: +81 45 650 5610  
Fax: +81 45 650 5611  
motorsport@bosch.com  
www.bosch-motorsport.com