

Injection Valve EV 12

www.bosch-motorsport.com



BOSCH
Invented for life



- ▶ Single beam or twin beam
- ▶ Flow rate at 3 bar: up to 1,023 cm³/min (N-heptane)
- ▶ Spray angle 5 to 60°
- ▶ With extension

EV 12 injection valves are EV 6 injection valves with an extended tip.

There is only one injector body size for the EV 12. Various delivery rates and spray-angles are available. The injection valves EV 6, EV 12 and EV 14 are compatible.

Technical Specifications

Mechanical Data

System pressure	Max. 8 bar
Weight	40 g
Installation length	48 mm (total 81 mm)
Fuel input	Top-feed injector
Operating temperature	-40 to 110°C
Permissible fuel temperatures	≤ 70°C
Climate-proof corresponding to saline fog test DIN 50 021	
Housing design	Standard with extension
Spray type	C (Conical Spray) or E (2-Spray)
Flow rate at 3 bar (n-heptane)	146 to 1,023 cm ³ /min 59 to 670 g/min
Spray angle α	5 to 60°

Bent angle γ	0 to 17°
--------------	----------

Coil resistance	11 to 16 Ω
-----------------	------------

Electrical Data

Power supply	6 to 16.5 V
--------------	-------------

Connectors and Wires

Connectors	Jetronic, Sumitomo, Motorsport connectors
------------	---

Installation Notes

Please ask for more information before ordering.

Ordering Information

EV 12, 120 g/min

Order number **0 280 157 002**

EV 12, 193 g/min

Order number **0 280 157 012**

EV 12, 217 g/min

Order number **0 280 155 897**

EV 12, 269 g/min

Order number **0 280 155 892**

EV 12, 310 g/min

Order number 0 280 157 000

Dimensions



EV 12 E 0 280 155 892



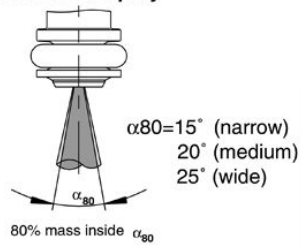
EV 12 E 0 280 155 897



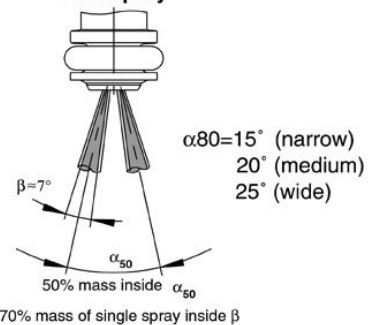
EV 12 E 0 280 157 000

Housing Variations

C: Conical Spray

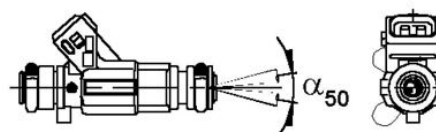
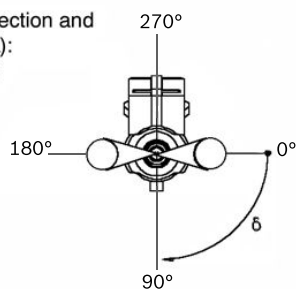


E: 2-Spray



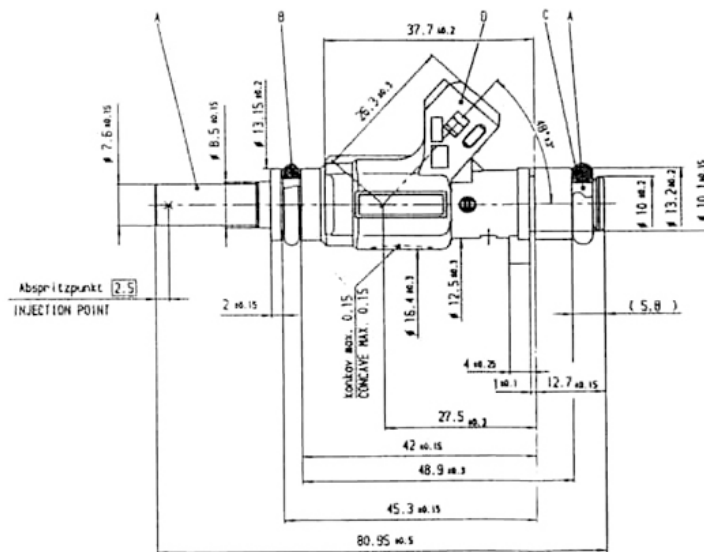
Angle between connection and spray level ($\delta = \text{delta}$):
(only 2-spray preparation)

$\delta = 0^\circ - 360^\circ$ possible



$\gamma = 0^\circ, 5^\circ, 10^\circ$

Spray Illustrations



EV 12 Variations

Variations of production type valves

Part Nr.	0 280 157 002	0 280 157 012	0 280 155 897	0 280 155 892	0 280 157 000
Flow rate/min	120 g/175 cm ³	193 g/282 cm ³	217 g/317 cm ³	269 g/393 cm ³	310 g/453 cm ³
Type	E	E	E	E	E
Housing	S	S	S	S	S
α	15°	15°	15°	15°	15°
γ	10°	10°	10°	10°	10°
Resistance	12 Ω	12 Ω	12 Ω	12 Ω	12 Ω

Further variations are available on request.

Represented by:

Europe: **North and South America:** **Asia-Pacific:**

Bosch Engineering GmbH Motorsport Robert-Bosch-Allee 1 74232 Abstatt Germany Tel.: +49 7062 911 79101 Fax: +49 7062 911 79104 motorsport@bosch.com www.bosch-motorsport.de	Bosch Engineering North America Motorsports 38000 Hills Tech Drive Farmington Hills, MI 48331-3417 United States of America Tel.: +1 248 876 2977 Fax: +1 248 876 7373 motorsport@bosch.com www.bosch-motorsport.com	Bosch Engineering Japan K.K. Motorsport Department 18F Queen's Tower C, 2-3-5 Minato Mirai Nishi-ku, Yokohama-shi Kanagawa 220-6218 Japan Tel.: +81 45 650 5610 Fax: +81 45 650 5611 motorsport@bosch.com www.bosch-motorsport.com
--	--	--

North and South America: Asia-Pacific:

Bosch Engineering North America Motorsports 38000 Hills Tech Drive Farmington Hills, MI 48331-3417 United States of America Tel.: +1 248 876 2977 Fax: +1 248 876 7373 motorsport@bosch.com www.bosch-motorsport.com	Bosch Engineering Japan K.K. Motorsport Department 18F Queen's Tower C, 2-3-5 Minato Mirai Nishi-ku, Yokohama-shi Kanagawa 220-6218 Japan Tel.: +81 45 650 5610 Fax: +81 45 650 5611 motorsport@bosch.com www.bosch-motorsport.com
--	--

Asia-Pacific:

Bosch Engineering Japan K.K.
Motorsport Department
18F Queen's Tower C, 2-3-5 Minato Mirai Nishi-ku, Yokohama-shi
Kanagawa 220-6218
Japan
Tel.: +81 45 650 5610
Fax: +81 45 650 5611
motorsport@bosch.com
www.bosch-motorsport.com