

Injection Valve EV 14i

www.bosch-motorsport.com



BOSCH
Invented for life



- Flow rate at 3 bar: up to 1,023 cm³/min (N-heptane)
- Spray angle 15 to 85°
- Extremely small housing
- Very low weight
- Special development for motorsports

EV 14i injection valves are especially developed for motorsport applications. The valve is designed for a wide range of flow rates and spray patterns. Very compact size simplifies mounting in a variety of applications.

Technical Specifications

Mechanical Data

System pressure	Max. 8 bar
Weight	≤20 g
Installation lengths	26.9 mm
Fuel input	Top-feed injector
Operating temperature	-40 to 110°C
Permissible fuel temperatures	≤70°C
Climate-proof corresponding to saline fog test DIN 50 021	
Housing design	Very compact
Spray type	C (Conical Spray) or E (2-Spray)
Flow rate at 3 bar (N-heptane)	Max. 1,023 cm ³ /min Max. 700 g/min
Spray angle α	15 to 85°

Bent angle γ	0 to 15°
--------------	----------

Coil resistance	12 Ω
-----------------	------

Electrical Data

Power supply	6 to 16.5 V
--------------	-------------

Connectors and Wires

Connectors	Div. motorsports connectors
------------	-----------------------------

Installation Notes

Please ask for more information before ordering.

Injectors with low resistance are only supplied with a peak and hold power stage.

Ordering Information

EV 14i, 213 g/min

Order number **B 280 436 323-03**

EV 14i, 263 g/min

Order number **B 280 436 270-03**

EV 14i, 261 g/min

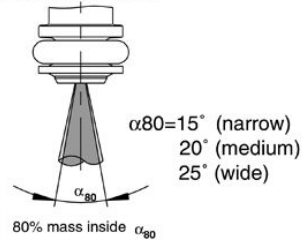
Order number **B 280 436 548-01**

EV 14i, 310 g/min

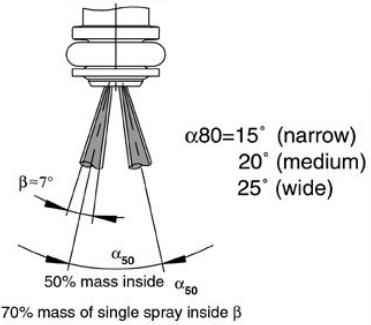
Order number **B 280 436 470-01**

Dimensions

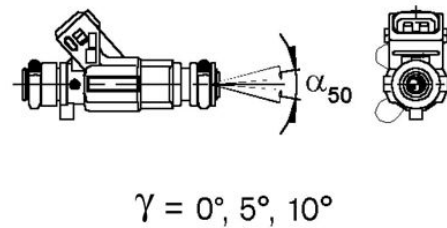
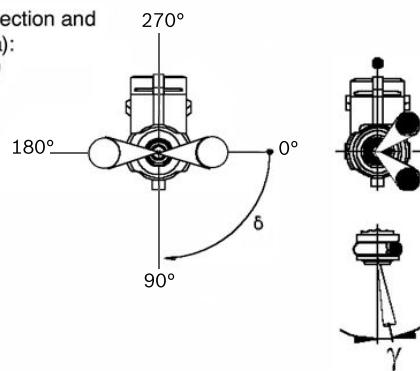
C: Conical Spray



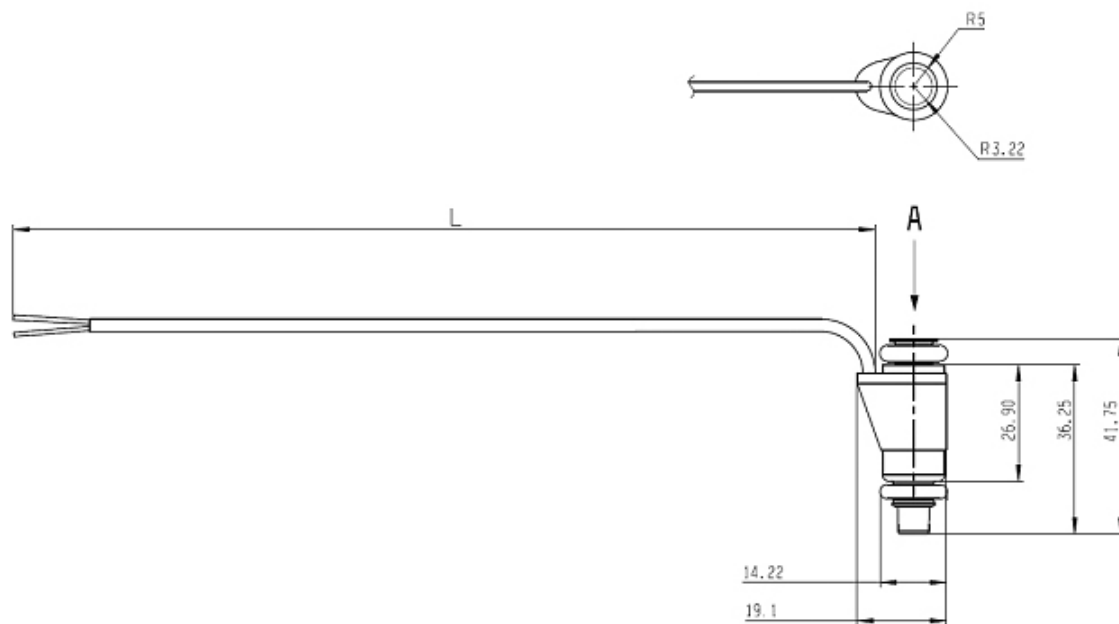
E: 2-Spray



Angle between connection and spray level ($\delta = \text{delta}$):
(only 2-spray preparation)
 $\delta = 0^\circ - 360^\circ$ possible



Spray Illustrations



EV 14i Variations

Variations of production type valves

Part Nr.	B 280 436 323-03	B 280 436 270-03	B 280 436 548-01	B 280 436 470-01
Flow rate/min	213 g/311 cm ³	263 g/385 cm ³	261 g/382 cm ³	310 g/453 cm ³
Type	C	C	E	C
Housing	i	i	ixT	i
α	85°	25°	20°	50°
γ	0°	0°	15°	0°
δ	0°	0°	90°	0°
Resistance	12 Ω	12 Ω	12 Ω	12 Ω

Further variations are available on request.

Represented by:

Europe:

Bosch Engineering GmbH
Motorsport
Robert-Bosch-Allee 1
74232 Abstatt
Germany
Tel.: +49 7062 911 79101
Fax: +49 7062 911 79104
motorsport@bosch.com
www.bosch-motorsport.de

North and South America:

Bosch Engineering North America
Motorsports
38000 Hills Tech Drive
Farmington Hills, MI 48331-3417
United States of America
Tel.: +1 248 876 2977
Fax: +1 248 876 7373
motorsport@bosch.com
www.bosch-motorsport.com

Asia-Pacific:

Bosch Engineering Japan K.K.
Motorsport Department
18F Queen's Tower C, 2-3-5 Minato Mirai Nishi-ku, Yokohama-shi
Kanagawa 220-6218
Japan
Tel.: +81 45 650 5610
Fax: +81 45 650 5611
motorsport@bosch.com
www.bosch-motorsport.com