

# Injection Valve EV 14

www.bosch-motorsport.com



**BOSCH**  
Invented for life



- Conical spray or 2-spray
- Flow rate at 3 bar: up to 1,023 cm<sup>3</sup>/min (N-heptane)
- Spray angle 15 to 85°
- With or without extension

EV 14 injection valves are the latest revision of the EV 6 injection valve technology.

EV 14 is designed for a wide range of flow rates and spray patterns. Compact size and three standard versions simplify mounting in a variety of applications.

## Technical Specifications

### Mechanical Data

System pressure	Max. 8 bar
Weight	≤ 30 g
Installation lengths	33.6, 48.65 or 60.65 mm
Fuel input	Top-feed injector
Operating temperature	-40 to 110°C
Permissible fuel temperatures	≤ 70°C
Climate-proof corresponding to saline fog test DIN 50 021	
Housing design	Compact (C), Standard (S), Long (L)
Spray type	C (Conical Spray) or E (2-Spray)
Flow rate at 3 bar (N-heptane)	146 to 1,023 cm <sup>3</sup> /min 100 to 700 g/min
Spray angle α	15 to 85°

Bent angle γ	0 to 15°
--------------	----------

Coil resistance	12 Ω
-----------------	------

### Electrical Data

Power supply	6 to 16.5 V
--------------	-------------

### Connectors and Wires

Connectors	Jetronic, Sumitomo, Motorsport connectors
------------	---

## Installation Notes

Please ask for more information before ordering.

## Ordering Information

### EV 14, 116 g/min

Order number **0 280 158 110**

### EV 14, 116 g/min

Order number **0 280 158 200**

### EV 14, 150 g/min

Order number **0 280 158 107**

### EV 14, 150 g/min

Order number **0 280 158 013**

### EV 14, 503 g/min

Order number **B 280 436 038-07**

### EV 14, 503 g/min

Order number **B 280 436 038-08**

### EV 14, 387 g/min

Order number **B 280 436 038-09**

### EV 14, 387 g/min

Order number **B 280 436 038-10**

### EV 14, 237 g/min

Order number **O 280 158 038**

### EV 14, 237 g/min

Order number **O 280 158 116**

### EV 14, 429 g/min

Order number **O 280 158 123**

### EV 14, 670 g/min

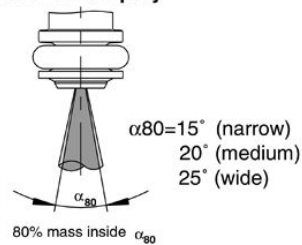
Order number **O 280 158 040**

### EV 14, 697 g/min

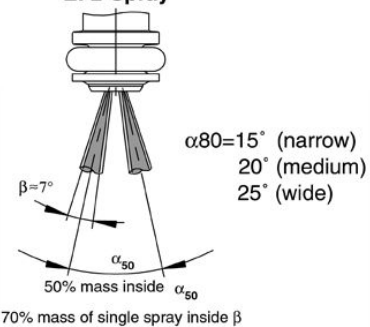
Order number **B 280 436 469-01**

## Dimensions

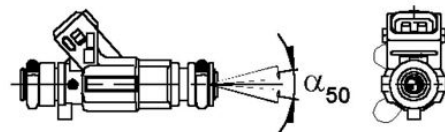
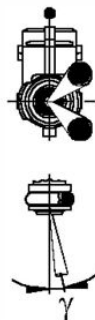
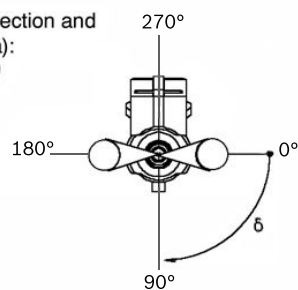
### C: Conical Spray



### E: 2-Spray

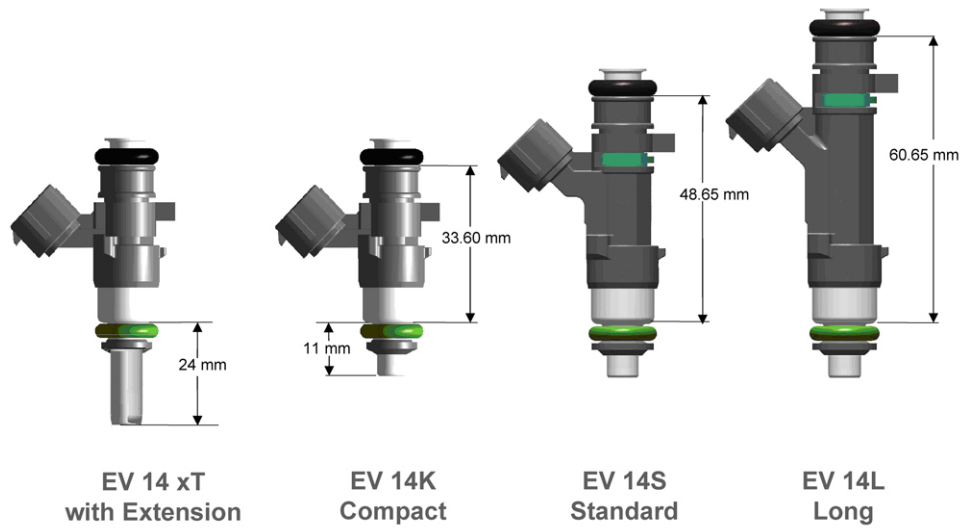


Angle between connection and spray level ( $\delta = \text{delta}$ ):  
(only 2-spray preparation)  
 $\delta = 0^\circ - 360^\circ$  possible

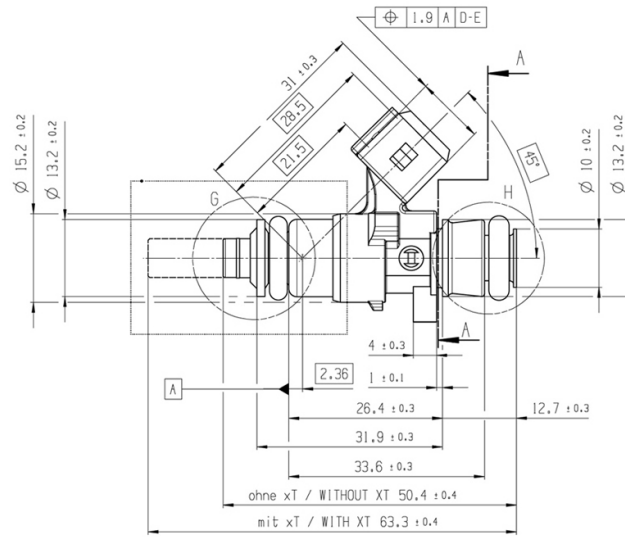


$\gamma = 0^\circ, 5^\circ, 10^\circ$

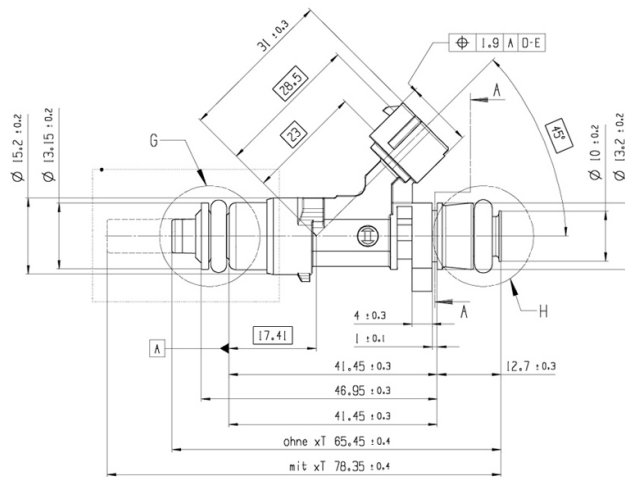
*Spray Illustrations*



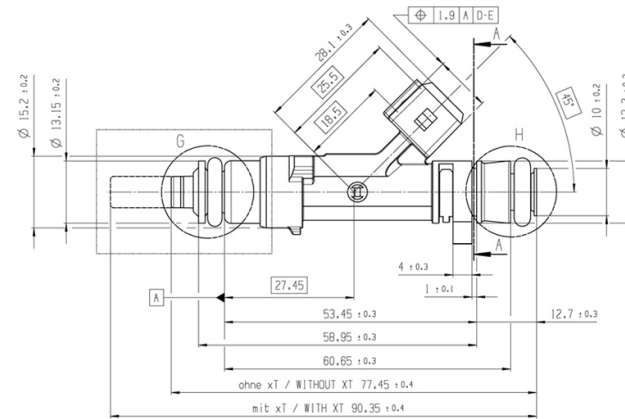
*Housing Variations*



*EV 14 Compact*



### EV 14 Standard



*EV 14 Long*

## EV 14 Variations

## Variations of production type valves

Part Nr.	0 280 158 110	0 280 158 200	0 280 158 107	0 280 158 013	0 280 158 038
----------	---------------	---------------	---------------	---------------	---------------

Flow rate/min	116 g/170 cm <sup>3</sup>	116 g/170 cm <sup>3</sup>	150 g/219 cm <sup>3</sup>	150 g/219 cm <sup>3</sup>	237 g/347 cm <sup>3</sup>
Type	C	E	C	E	C
Housing	L	S	L	S	KxT
$\alpha$	15°	15°	20°	19°	20°
$\gamma$	0°	0°	0°	0°	0°
$\delta$	0°	90°	0°	90°	0°
Resistance	12 $\Omega$	12 $\Omega$	12 $\Omega$	12 $\Omega$	12 $\Omega$

Part Nr.	0 280 158 116	0 280 158 123	0 280 158 040
----------	---------------	---------------	---------------

Flow rate/min	237 g/347 cm <sup>3</sup>	429 g/627 cm <sup>3</sup>	670 g/980 cm <sup>3</sup>
Type	E	E	C
Housing	L	SxT	KxT
$\alpha$	22°	25°	30°
$\gamma$	5°	0°	0°
$\delta$	90°	90°	0°
Resistance	12 $\Omega$	12 $\Omega$	12 $\Omega$

Further variations are available on request

## Variations of Motorsport valves

Part Nr.	B 280 436 038-07	B 280 436 038-08	B 280 436 038-09	B 280 436 038-10	B 280 436 469-01
----------	------------------	------------------	------------------	------------------	------------------

Flow rate/min	503 g/736 cm <sup>3</sup>	503 g/736 cm <sup>3</sup>	387 g/566 cm <sup>3</sup>	387 g/566 cm <sup>3</sup>	697 g/1,019 cm <sup>3</sup>
Type	C	C	C	C	E
Housing	S	S	S	S	S
$\alpha$	70°	25°	70°	25°	20°
$\gamma$	0°	0°	0°	0°	0°
Resistance	12 $\Omega$	12 $\Omega$	12 $\Omega$	12 $\Omega$	12 $\Omega$

Further variations are available on request.

**Represented by:**

**Europe:**

Bosch Engineering GmbH  
Motorsport  
Robert-Bosch-Allee 1  
74232 Abstatt  
Germany  
Tel.: +49 7062 911 79101  
Fax: +49 7062 911 79104  
motorsport@bosch.com  
www.bosch-motorsport.de

**North and South America:**

Bosch Engineering North America  
Motorsports  
38000 Hills Tech Drive  
Farmington Hills, MI 48331-3417  
United States of America  
Tel.: +1 248 876 2977  
Fax: +1 248 876 7373  
motorsport@bosch.com  
www.bosch-motorsport.com

**Asia-Pacific:**

Bosch Engineering Japan K.K.  
Motorsport Department  
18F Queen's Tower C, 2-3-5 Minato Mirai Nishi-ku, Yokohama-shi  
Kanagawa 220-6218  
Japan  
Tel.: +81 45 650 5610  
Fax: +81 45 650 5611  
motorsport@bosch.com  
www.bosch-motorsport.com